

**my body**

**tōku tinana**

eyes



ngā karu



mouth



waha



back



tuarā



ear



taringa



foot



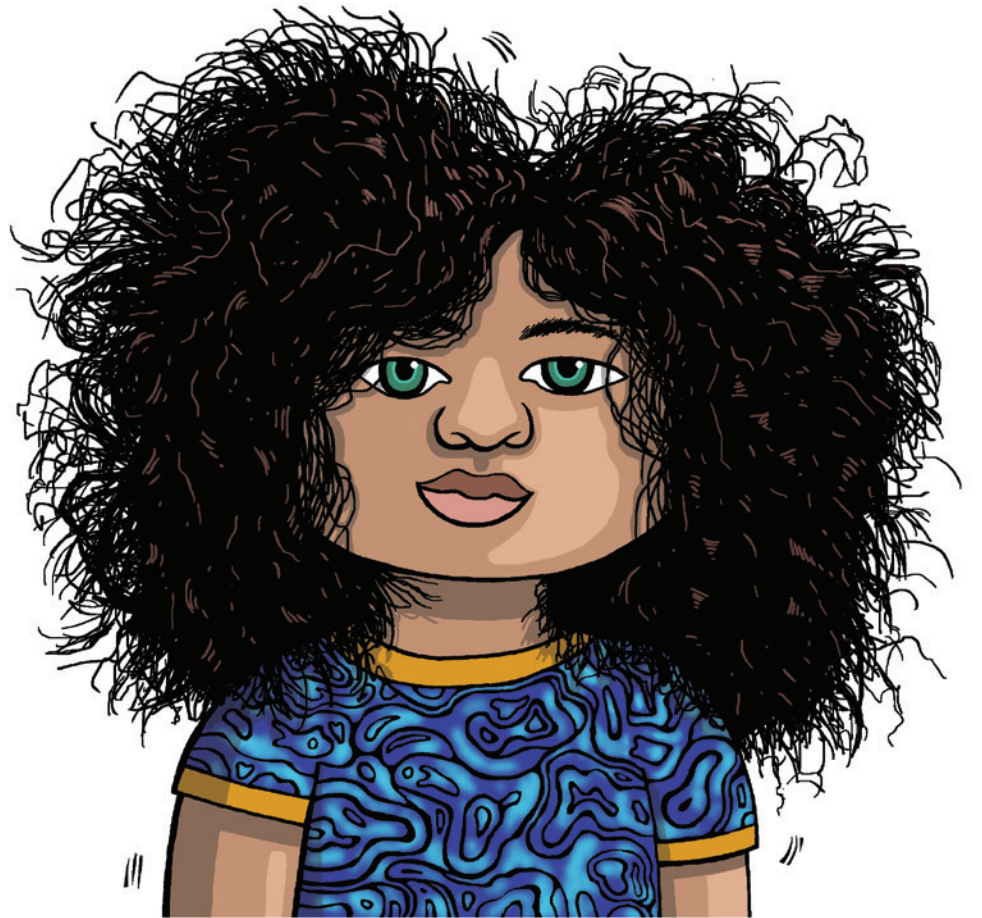
waewae



hair



makawe



hands



ringaringa





nose



ihu



tongue



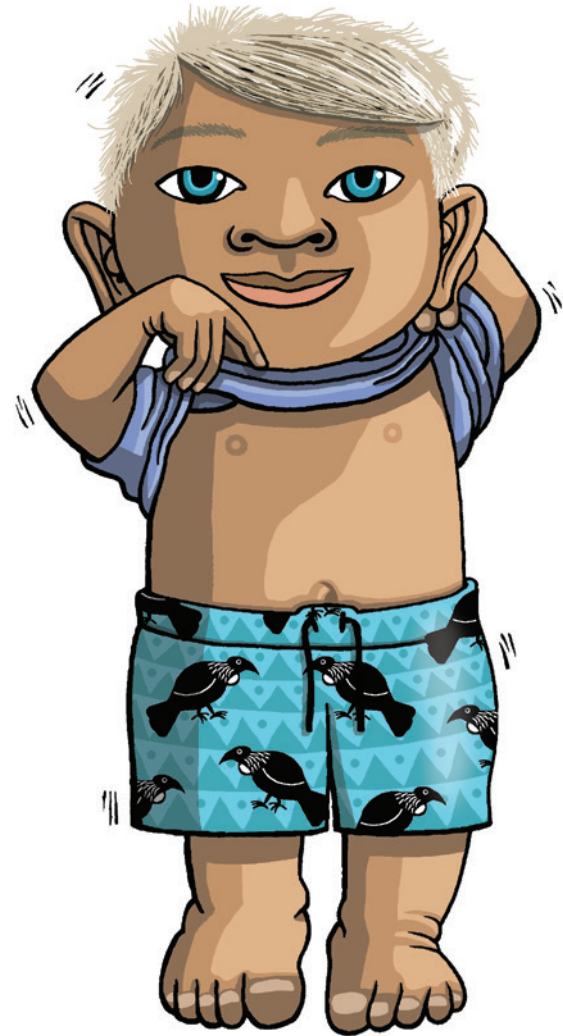
arero



tummy



puku



# sounds

Māori	Say it like ...
<b>arero</b> (tongue)	<i>ah-reh-raw</i>
<b>tuarā</b> (back)	<i>too-ah-rah</i>
<b>ihu</b> (nose)	<i>e-who</i>
<b>waha</b> (mouth)	<i>wah-hah</i>
<b>puku</b> (tummy)	<i>puu-koo</i>
<b>makawe</b> (hair)	<i>mah-kah-weh</i>
<b>ngā karu</b> (eye/s)	<i>ngaah kah-roo</i>
<b>taringa</b> (ear/s)	<i>tah-ree-ngah</i>
<b>ringaringa</b> (arm/hand)	<i>ringah-ringah</i>
<b>waewae</b> (leg/foot)	<i>why-why</i>

